

ATELIER

A beautiful soft and luxurious velvet with three-dimensional fluidity.



INSTYLE

ATELIER



ATELIER Admire



ATELIER Glow



ATELIER Decadent



ATELIER Genie



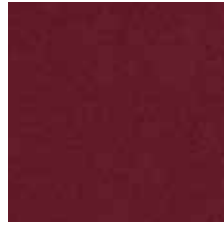
ATELIER Mango



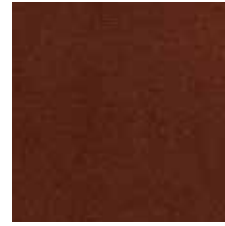
ATELIER Lava



ATELIER Exotic



ATELIER Venetian



ATELIER Luxury



ATELIER Vintage



ATELIER Himalayan



ATELIER Ballet



ATELIER Nostalgia



ATELIER Mystic



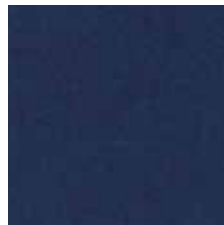
ATELIER Indulgent



ATELIER Opulent



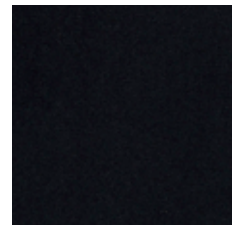
ATELIER Bloom



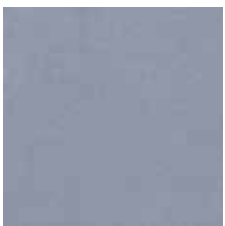
ATELIER Yale



ATELIER Oxford



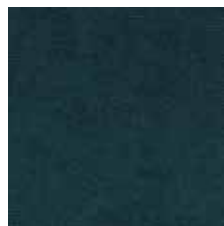
ATELIER Alibi



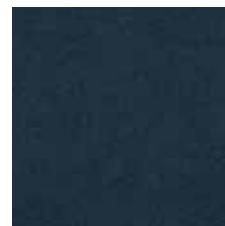
ATELIER Powder



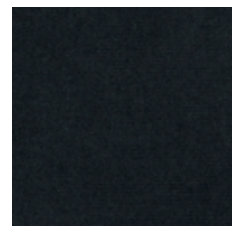
ATELIER Ocean



ATELIER Impress



ATELIER Capri



ATELIER Jungle



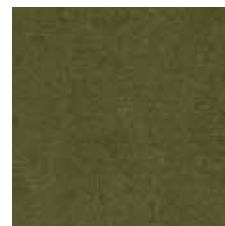
ATELIER Palm



ATELIER Hunter



ATELIER Limelight



ATELIER Envy



ATELIER Antique

Product may vary in colour due to the nature of the media
Please refer to website for current colour range

ATELIER



ATELIER Breeze



ATELIER Raw



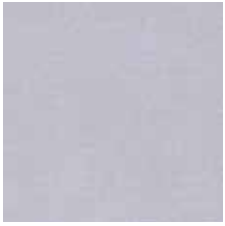
ATELIER Minx



ATELIER Whimsy



ATELIER Tawny



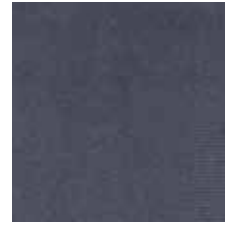
ATELIER Salt Lake



ATELIER Quartz



ATELIER Dreamy



ATELIER Runway



ATELIER Zen



ATELIER Ultra

ATELIER



COMPOSITION 92% polyester, 5% cotton, 3% latex

WIDTH / WEIGHT 140cm / 500gsm

PATTERN REPEAT nil

ROLL SIZE 40m approx.

CARE CODE Upholstery: CTA 2
Curtain: Dryclean Only

ABRASION
Martindale AS2001.2.25 >100,000
Stoll AS2687.A 1997 2,500

CTA RATING **hc** HEAVY DUTY
COMMERCIAL USE

SEAM SLIPPAGE Warp 2mm Weft 1mm
AS2001.2.22 Note: All seams must be overlocked or secured to prevent the premature failure of the seam due to fraying

PILLING 5

LIGHTFASTNESS >5
ISO 105-B02

FIRE RATINGS Ignitability 11
AS/NZS 1530.3 Spread of Flame 8
Heat Evolved 4
Smoke Developed 5

AS/NZS 3837 BCA Group 1
Av. Specific Extinction Area 218 m²/kg

ISO 5660.1 NZBC Group 1-S
Av. Specific Extinction Area 238m²/kg

APPLICATION upholstery, screen, wall panel, curtain

PLEASE NOTE Results from performance tests are guidelines only

INTERLINER USE It is important to use an interliner between the ATELIER velvet and the substrate. Failure to do so will void the product warranty.

SHADING / NAP

- The pile on velvet may flatten during upholstery or use. This is a normal characteristic of velvet and is not a fabric fault.
- A shading appearance during use should be expected, especially in areas of high use such as arms, seat fronts and back cushions.
- When upholstery it is important to pay attention to the nap direction. Velvet must be upholstered or sewn with the nap running in the same direction on panels / furniture.
- Failure to do this will result in adjoining panels / furniture showing a contrasting light and dark shading effect.

GREEN STAR + LEED

- ATELIER can be used on white furniture certified by AFRDI, GECA, Ecospecifier (Level B + C) and ECNZ.
- The Green Star Rating Tool states "Where at least 90% of an item's mass is certified to a GBCA recognised standard, the item can be entered as a certified product at Level A, B or C". Therefore, any fabric can be used as fabrics are almost always under 10% by weight of a furniture item.