

ACCENT

A sophisticated vinyl with an antique wax-polished appearance.



INSTYLE

ACCENT



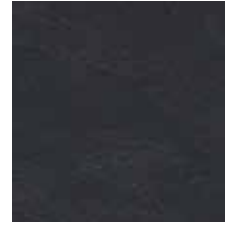
ACCENT Polar



ACCENT Antique



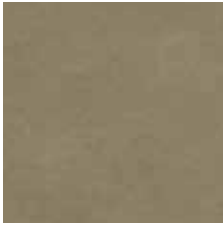
ACCENT Misty



ACCENT Ironstone



ACCENT Shadow



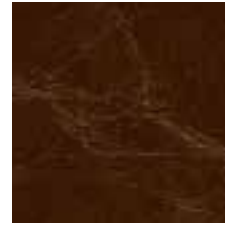
ACCENT Sandstone



ACCENT Willow



ACCENT Malt



ACCENT Caramel



ACCENT Toffee



ACCENT Highlight



ACCENT Citronella



ACCENT Desert



ACCENT Spice



ACCENT Brick



ACCENT Hot



ACCENT Russet



ACCENT Iris



ACCENT Plum



ACCENT Cowboy



ACCENT Grasshopper



ACCENT Khaki



ACCENT Forest



ACCENT Jungle



ACCENT Burnish



ACCENT Lagoon



ACCENT Inky



ACCENT Dusk

Product may vary in colour due to the nature of the media
Please refer to website for current colour range



COMPOSITION	80% PVC, 15% polyester, 5% cotton (Face: 100% PVC, Back: polyester, cotton)
WIDTH	137cm
WEIGHT	780gsm
PATTERN REPEAT	nil
ROLL SIZE	27.4m approx.
CARE CODE	V2
ABRASION Martindale AS2001.2.25	100,000
LIGHTFASTNESS AS2001.4.21	> 6
FASTNESS TO RUBBING AS2001.4.3	Wet 5 Dry 5
BREAKING FORCE AS4878.6	Length 295 Width 285 (N/50mm)
COATING ADHESION AS4878.8	Length 48.3 Width 55.0 (N/50mm)
RESISTANCE TO FLEXING AS4878.9	Length + Width: No cracking
BLOCKING RESISTANCE RESISTANCE TO HEAT AS4878.11	F to F Slight adhesion / No damage F to B No blocking or adhesion B to B No blocking or adhesion
LOSS OF PLASTICISER AS1441.8	1.3 %
UV RESISTANCE ASTM G26-96 Method C	200 hours (excellent)
APPLICATION	upholstery, screen, wall panel

FIRE TESTS

AS/NZS 1530.3	Ignitability	16
	Spread of Flame	0
	Heat Evolved	2
	Smoke Developed	7
AS/NZS 3837	BCA Group 3	
	Av. Specific Extinction Area	605.6m ² /kg
IMO Resolution A.652(16)	Sections 8.2 + 8.3* Pass	
	*Using flame retardant polyurethane foam	
Additional Fire Tests	Available on request	

PERFORMANCE

- **Waterproof, Easy to Clean + Bleach Resistant:** Easily cleaned with mild soap and water. Can be easily disinfected using one part bleach and ten parts water.
- **Superior Light Fastness:** Achieves over 200 hours light fastness.
- **Additional Stability:** Woven fabric backing provides additional stability.
- Ideal for healthcare, hospitality, marine interior, education, office and residential indoor applications.

ENVIRONMENT + GREEN STAR

- Environmentally Improved Production Process: reduced energy and water use, solution-dyed product and recycling of water. ACCENT features a non-phthalate plasticiser instead of conventional phthalate plasticisers and softening agents. ACCENT is 21P phthalate free and meets the requirements set by California Prop 65, CPSIA, REACH as well as other environmental and health and safety standards.
- ACCENT can be used on white furniture certified to Ecospecifier, AFRDI, GECA and ECNZ.
- The Green Star Rating Tool states “Where at least 90% of an item’s mass is certified to a GBCA recognised standard, the item can be entered as a certified product at Level A, B or C.” Therefore any fabric can be used as fabrics are almost always under 10% by weight of a furniture item.