

FEEL

A beautiful wool and alpaca marle felt with a soft luxurious touch.



INSTYLE

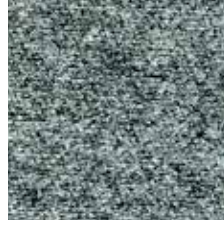
FEEL



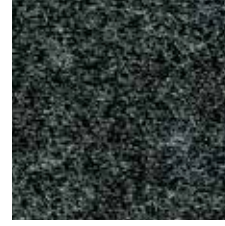
FEEL Young Again



FEEL Awesome



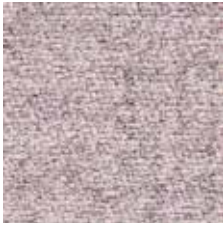
FEEL Respected



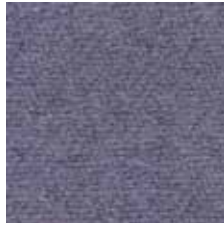
FEEL Confident



FEEL Invincible



FEEL Inspired



FEEL Calm



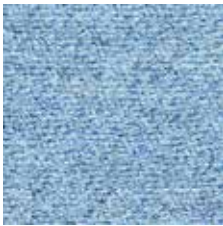
FEEL Fabulous



FEEL Amazing



FEEL Beautiful



FEEL Wonderful



FEEL Sophisticated



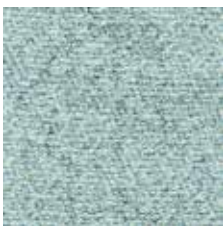
FEEL Precious



FEEL Chilled



FEEL Secure



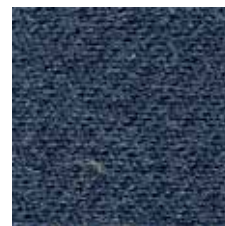
FEEL Playful



FEEL Lucky



FEEL Great



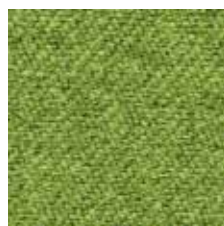
FEEL Liberated



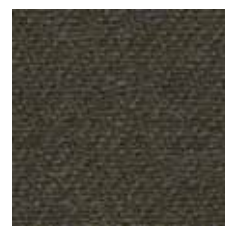
FEEL Nostalgic



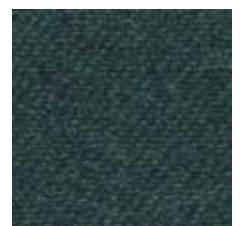
FEEL Thrilled



FEEL Free



FEEL Zen



FEEL Splendid

Product may vary in colour due to the nature of the media
Please refer to website for current colour range

FEEL



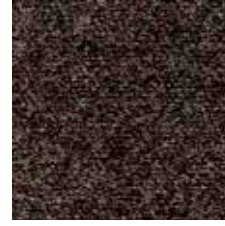
FEEL Elated



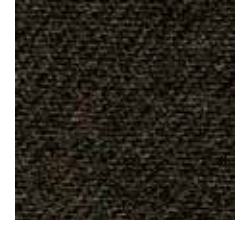
FEEL Alive



FEEL Unique



FEEL Satisfied



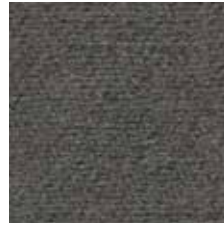
FEEL Positive



FEEL Peachy



FEEL At Home



FEEL Grounded



FEEL Refined



FEEL Wanted



FEEL Optimistic



FEEL Daring



FEEL Adventurous



FEEL Up For It



FEEL Loved



FEEL Jubilant

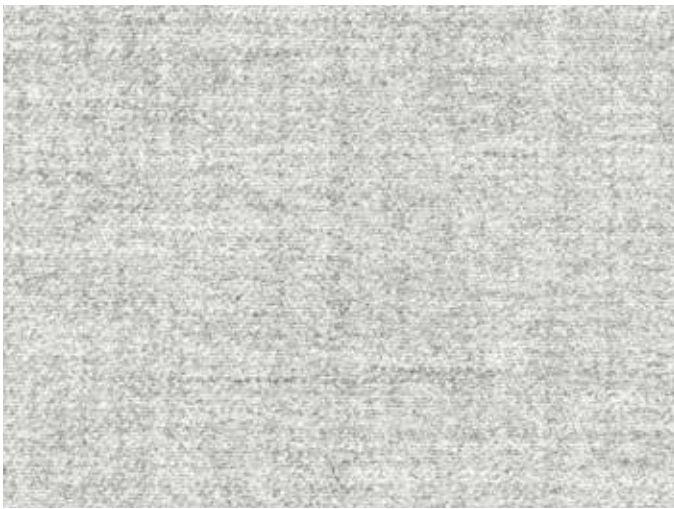



FEEL Merry



FEEL Excited

FEEL



COMPOSITION	65% wool, 20% nylon, 15% alpaca
WIDTH / WEIGHT	140cm / 418gsm
PATTERN REPEAT	nil
ROLL SIZE	50m approx.
CARE CODE	CTA 1
ABRASION Martindale AS2001.2.25	46,500
CTA RATING	 HEAVY DUTY COMMERCIAL USE
SEAM SLIPPAGE AS2001.2.22	Warp 3.3mm Weft 5.0mm Note: All seams must be overlapped or secured to prevent the premature failure of the seam due to fraying
PILLING Martindale IWS196	3-4
LIGHTFASTNESS ISO 105 B02	5
FIRE RATINGS AS/NZS 1530.3	Ignitability 13 Spread of Flame 0 Heat Evolved 1 Smoke Developed 5
AS/NZS 3837	BCA Group 2 Av. Specific Extinction Area 51.7 m ² /kg
ISO 5660.1	NZBC Group 2S Av. Specific Extinction Area 54.9m ² /kg
IMO Resolution A.625(16)	Sections 8.2 + 8.3: Pass
Additional Fire Tests	California 117E, NFPA 260 UFAC
APPLICATION	upholstery, screen, wall panel
PLEASE NOTE	Results from performance tests are guidelines only

ENVIRONMENT

- 80% rapidly renewable content.
- Environmentally Improved Production Process: reduced water and energy consumption, recycling of waste.
- Wool absorbs indoor air contaminants, benefiting indoor air quality.
- 80% biodegradable (natural fibre content) and recyclable.

GREEN STAR + LEED

- FEEL can be used on white furniture certified to Ecospecifier, AFRDI, ECNZ and GECA.
- The Green Star Rating Tool states "Where at least 90% of an item's mass is certified to a GBCA recognised standard, the item can be entered as a certified product at Level A, B or C." Therefore any fabric can be used as fabrics are almost always under 10% by weight of a furniture item.
- 80% rapidly renewable content contributes to LEED MR Credit 6 Rapidly Renewable Materials.