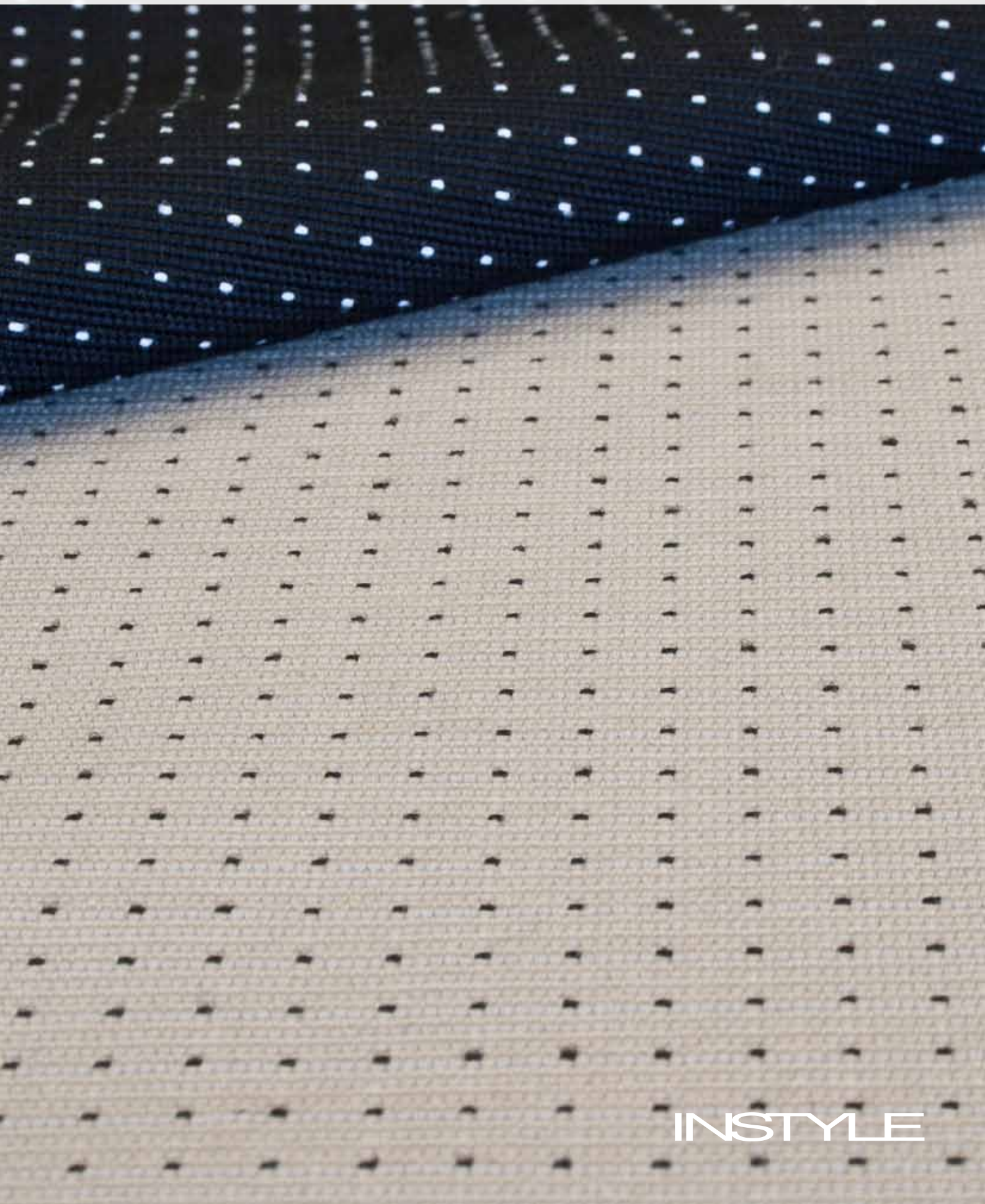


CITY

A contemporary and classic textile with a playful circular pattern.

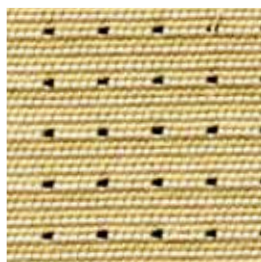


INSTYLE

CITY



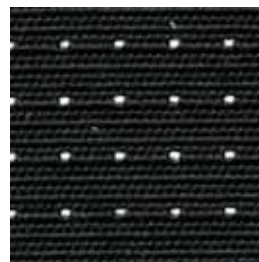
CITY Living



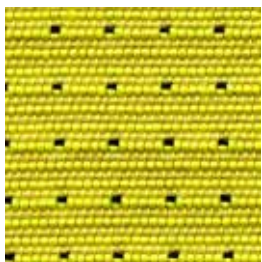
CITY Block



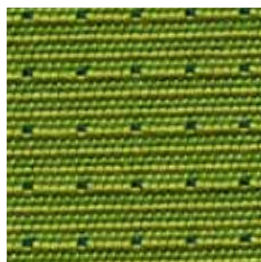
CITY Hall



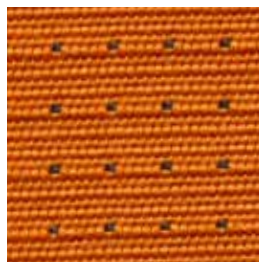
CITY Nightlife



CITY Extra



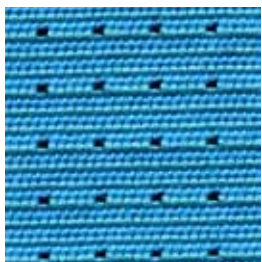
CITY Park



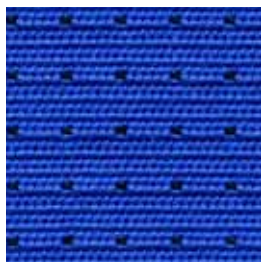
CITY Guide



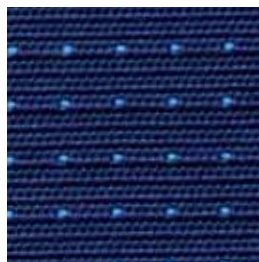
CITY Attraction



CITY To Surf



CITY Sights



CITY Dreams



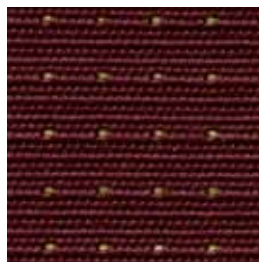
CITY Inc



CITY Fashion



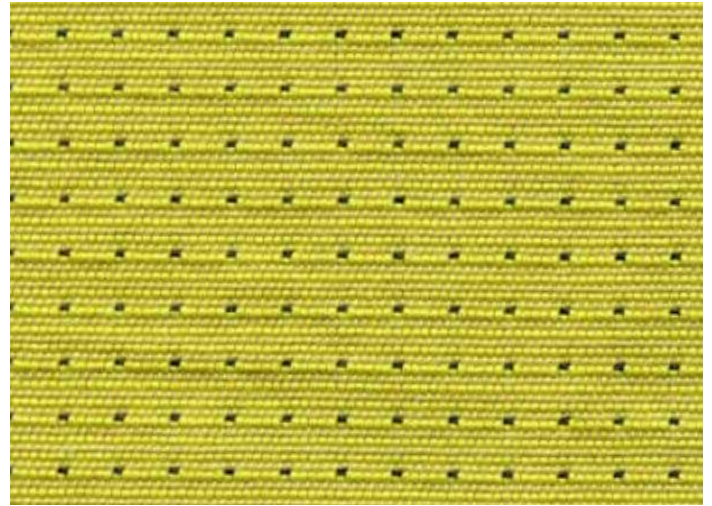
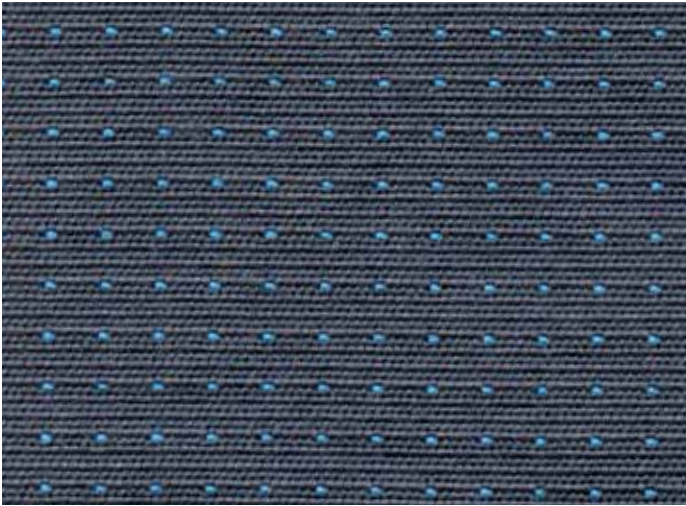
CITY Centre




CITY Worker

Patterns shown are not to scale
Product may vary in colour due to the nature of the media
Please refer to website for current colour range

CITY



COMPOSITION	56% polyester, 44% polypropylene
WIDTH / WEIGHT	137cm / 363gsm
PATTERN REPEAT	H 0.7cm V 0.7cm
ROLL SIZE	50m approx.
CARE CODE	CTA 1
ABRASION Martindale AS2001.2.25 Wyzenbeek ASTM 4157	26,500 >100,000 double rubs
CTA RATING	 GENERAL COMMERCIAL USE
SEAM SLIPPAGE AS2001.2.22	Warp 5.3mm Weft 3.3mm Note: All seams must be overlocked or secured to prevent the premature failure of the seam due to fraying
PILLING Martindale IWS196	3/4
LIGHTFASTNESS AS 2001.4.21	> 6
FIRE RATINGS AS/NZS 1530.3	Ignitability 11 Spread of Flame 0 Heat Evolved 2 Smoke Developed 5
AS/NZS 3837 (Cone Calorimeter)	BCA Group 2 Av. Specific Extinction Area 298.8 m2/kg
APPLICATION	upholstery, screens, wall panelling
ORIGIN	Australia

ENVIRONMENT

- 44% low embodied-energy material: polypropylene has a lower embodied-energy compared to polyester and nylon.
- Environmentally Improved Production Process: reduced energy consumption, reuse and recycling of waste.

GREEN STAR

- CITY can be used on white furniture certified to Ecospecifier, AFRDI, GECA and ECNZ.
- The Green Star Rating Tool states “Where at least 90% of an item’s mass is certified to a GBCA recognised standard, the item can be entered as a certified product at Level A, B or C.” Therefore any fabric can be used as fabrics are almost always under 10% by weight of a furniture item.