

# BRAILLE

An iconic award winning fabric by Ilias with a contemporary playful dot pattern.

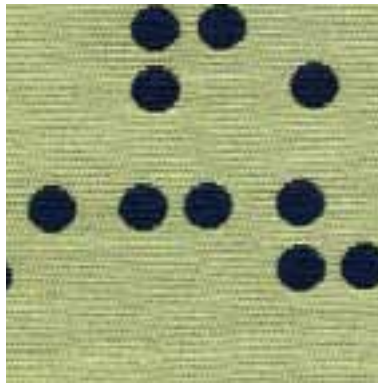


INSTYLE

# BRAILLE



BRAILLE Language



BRAILLE Stylus



BRAILLE Surface



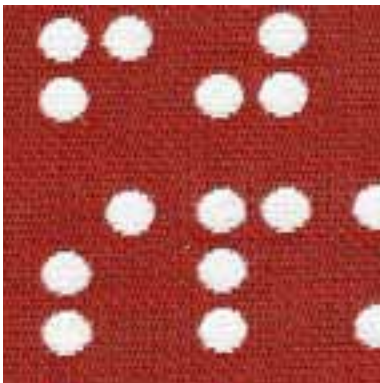
BRAILLE Communication



BRAILLE Transcript



BRAILLE Letter



BRAILLE Character




BRAILLE Touch

Patterns shown are not to scale  
Product may vary in colour due to the nature of the media  
Please refer to website for current colour range

# BRAILLE by Ilias



|                        |  |                        |
|------------------------|--|------------------------|
| COMPOSITION            | 69% cotton, 31% nylon  |                        |
| WIDTH                  | 137cm  |                        |
| WEIGHT                 | 361gsm   |                        |
| PATTERN REPEAT         | H 69.8cm V 113cm   |                        |
| ROLL SIZE              | 55m approx.  |                        |
| CARE CODE              | CTA 1  |                        |
| ABRASION               |  |                        |
| Wyzenbeek ASTM 4157    | >100,000 double rubs   |                        |
| Martindale AS2001.2.25 | 100,000  |                        |
| CTA RATING             |  <b>HEAVY DUTY<br/>COMMERCIAL USE</b> |                        |
| SEAM SLIPPAGE          | Warp 2.8mm Weft 2.0mm  |                        |
| AS2001.2.22            | Note: All seams must be overlocked or secured to prevent the premature failure of the seam due to fraying                |                        |
| PILLING                | 4/5  |                        |
| Martindale IWS196      |  |                        |
| LIGHTFASTNESS          | 6  |                        |
| ISO 105 B02            |  |                        |
| FIRE RATINGS           | Ignitability   | 10                     |
| AS/NZS 1530.3          | Spread of Flame  | 0                      |
|                        | Heat Evolved   | 1                      |
|                        | Smoke Developed  | 4                      |
| AS/NZS 3837            | BCA Group 2  |                        |
| (Cone Calorimeter)     | Av. Specific Extinction Area   | 63.3m <sup>2</sup> /kg |
| APPLICATION            | upholstery, screens, wall panels   |                        |

BRAILLE tells the story of 'Listen and Record'.

"I record my own voice every day and listen to it exactly a year later. I've been doing this for eleven years. . . . Every night before bed, I take out the tape for that day of the year. I first listen to its content, which was recorded a year ago on the same day. Then I record my current voice over it. . . . The contents of my recordings vary, just like what people write in journals vary. . . . This allows me to live a life parallel to my life a year ago."

Story by Juro Osawa.

## ENVIRONMENT

- 69% rapidly renewable content (cotton).
- Environmentally Improved Production Process: reduced energy consumption, reuse and recycling of waste and use of environmentally optimised dyes.
- IAQ: Cotton absorbs prevalent indoor air contaminants therefore benefiting indoor air quality.
- Reusable and 69% biodegradable (natural fibre content).
- The manufacturer has an environmental policy.

## GREEN STAR + LEED

- BRAILLE can be used on white furniture certified to Ecospecifier, AFRDI, GECA and ECNZ.
- The Green Star Rating Tool states "Where at least 90% of an item's total mass is certified to a GBCA recognised standard, the item can be entered as a certified product at Level A, B or C." Therefore any fabric can be used as fabrics are almost always under 10% by weight of a furniture item.
- 69% rapidly renewable content contributes to LEED MR Credit 6 Rapidly Renewable Materials.