

# THINK.®

# THINK.®

## SPECIFICATIONS

Composition	100% Olefin
Pattern Repeat	Nil
Fire Test Certificate No. AS 1530 PT3	7-510096-BN
Roll Size (approx.)	50 metre rolls
Width	137cm wide
Usage	Upholstery
CTA Performance Rating	HEAVY DUTY COMMERCIAL USE

## CTA PERFORMANCE RATING

Tests conducted by independent testing laboratories indicate that THINK met or exceeded the performance guidelines for HEAVY DUTY COMMERCIAL USE, as determined by the CTA (Commercial Textile Association of Australia and New Zealand).

## FIRE RETARDANCY

THINK is tested to AS 1530 PT3 and IMO A.652(16). Fire test certificates available upon request.

## OPTIONAL EXTRAS

The INSTYLE Design Studio is available to develop custom designs and colours to cater for your special requirements. Please contact your nearest INSTYLE office for pricing and minimum quantity order details.

## DESIGNED IN AUSTRALIA

THINK was designed in Australia by the INSTYLE Design Studio and is made in Australia.

## COLOUR VARIATIONS

Colour variations from batch to batch may occur. All fabric for customer orders will be supplied within commercial tolerance.

## FABRIC CARE

**Do not remove any part for separate cleaning.**

Protect from direct and reflected sunlight. Vacuum regularly using low suction. Rotate reversible cushions regularly. Professional cleaning recommended. For detailed instructions, refer to CTA CARE CODE 1.

## ENVIRONMENTAL CARE

INSTYLE CONTRACT TEXTILES is an environmentally responsible company, and reducing wastage is our concern. When you no longer need this sample card, please mail it to your nearest INSTYLE CONTRACT TEXTILES office or phone for collection so this resource can be reused.

## COPYRIGHT

The collection name, product names and designs contained in this collection are the intellectual property of INSTYLE CONTRACT TEXTILES Pty Ltd. Use of these designs to develop textiles, carpet, laminate, glass or any alternative product is prohibited without written consent from INSTYLE CONTRACT TEXTILES Pty Ltd. LIFE Textiles® is a registered trademark of INSTYLE CONTRACT TEXTILES Pty Ltd.

# INSTYLE

Please contact your nearest INSTYLE office for further details and sampling:

### INSTYLE CONTRACT TEXTILES AUSTRALIA

• NSW (02) 9317 0222 • VIC/TAS (03) 9427 9055 • QLD (07) 3254 4788  
• ACT (02) 6284 7245 • WA (08) 9388 1277 • SA/NT 0414 411 562  
esales@instyle.com.au • www.instyle.com.au

### INSTYLE CONTRACT TEXTILES USA

• SAN FRANCISCO 415 515 9851 • robert@instylewovinwall.com • www.instylecontracttextiles.com

### VIVID TEXTILES NEW ZEALAND

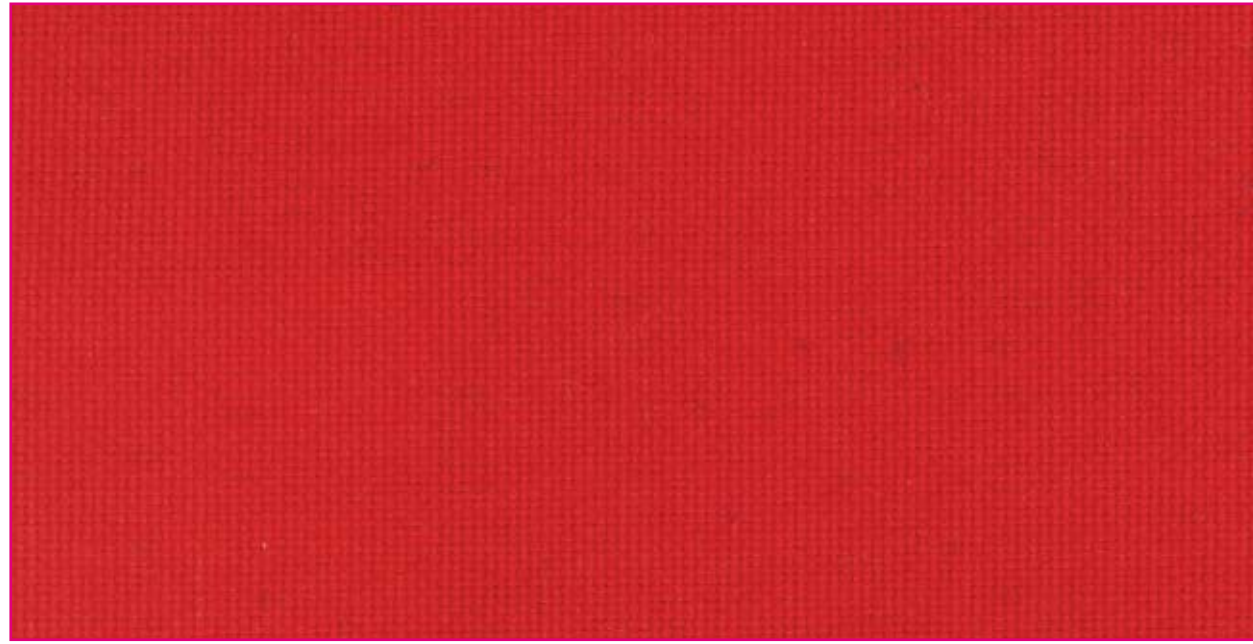
• AUCKLAND • t 09 302 8885 • f 09 302 8886 • esales@vividtextiles.co.nz • www.vividtextiles.co.nz



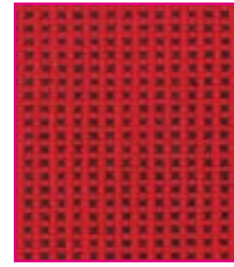
COMMERCIAL TEXTILE ASSOCIATION OF  
AUSTRALIA & NEW ZEALAND LIMITED

# INSTYLE

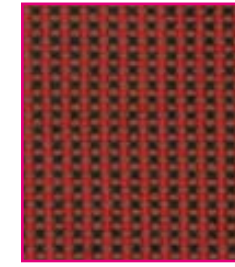
# THINK<sup>©</sup>



THINK Wow



THINK Boldy



THINK Solution



THINK Hot



THINK Impact



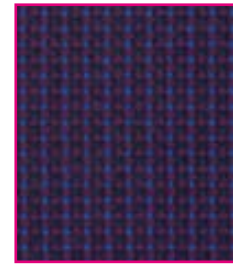
THINK Straight



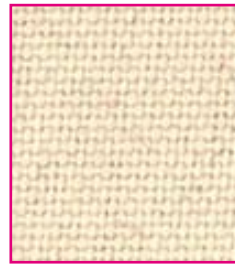
THINK Kindly



THINK Fast



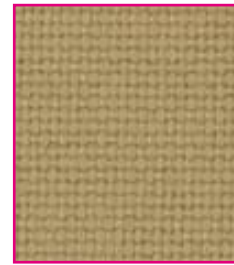
THINK Advantage



THINK Style



THINK Quality



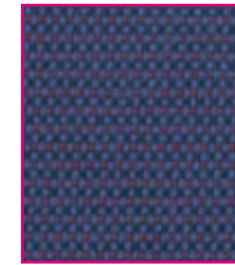
THINK Ahead



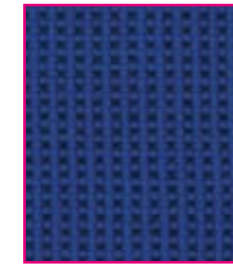
THINK Natural



THINK Big



THINK Flexibly



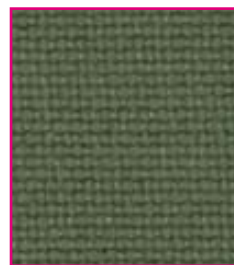
THINK Aloud



THINK Deeply



THINK Creatively



THINK Positively



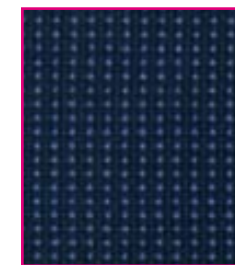
THINK Modern



THINK Tank



THINK Versatile



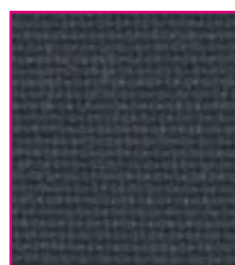
THINK Laterally



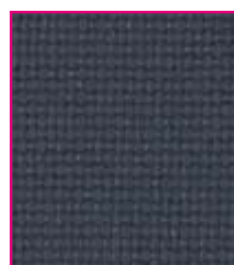
THINK Seriously



THINK Practical



THINK Tactics



THINK Choice



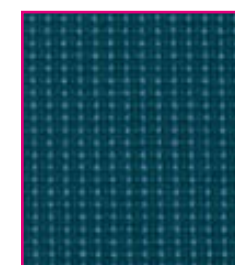
THINK Of Me



THINK Night Time



THINK It Over



THINK About It



THINK Clearly



THINK Together