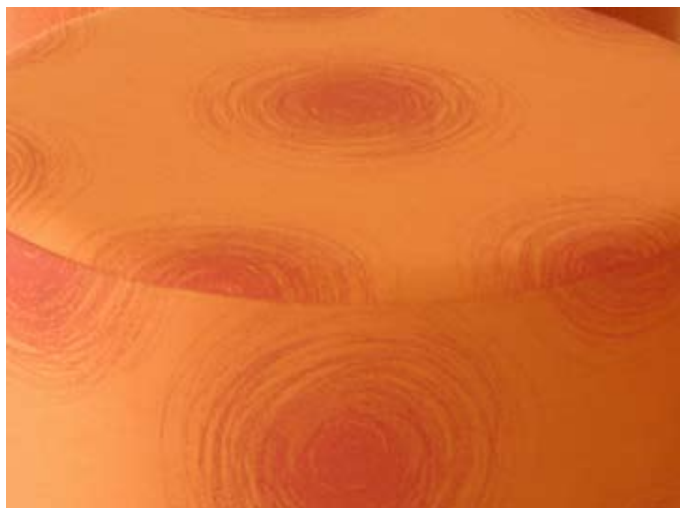



PLANET (LIFE Textiles®)



COMPOSITION	100% Australian Worsted EthEco® wool
WIDTH	140cm
WEIGHT	325gsm
PATTERN REPEAT	H 140cm / V 98cm
ROLL SIZE	53m (approx.)
CARE CODE	CTA 1
ABRASION Wyzenbeek ASTM 4157 Martindale AS2001.2.25	45,000 double rubs 22,000
CTA RATING	 GENERAL COMMERCIAL USE
SEAM SLIPPAGE AS2001.2.22	Warp 5.7mm Weft 4.4mm
PILLING Martindale IWS196	4 - 5
LIGHTFASTNESS ISO 105-B02	5+
FIRE RATINGS AS 1530 Pt.3	Ignitability 0 Spread of Flame 0 Heat Evolved 0 Smoke Developed 4
AS/NZS 3837 (Cone Calorimeter)	BCA Group 1 Av. Specific Extinction area 96.6m ² /kg
NO. OF COLOURS	7
USE	Upholstery, screen and panels

ENVIRONMENTAL BENEFITS

RAW MATERIALS

- EthEco® wool is sourced from non-mulesed sheep cared for on holistic-managed farms.
- 100% sustainable, rapidly renewable content.

PRODUCTION

- Manufactured to strict environmental criteria (LIFE Textiles® specification).
- Environmentally Improved Production Process: reduced water (6% savings) and energy consumption, non-potable water supply (100% rain and ground water), reuse & recycling of waste, use of metal-free dyes.
- Manufacturer has an Environmental Management System and a Quality Management System.

HUMAN HEALTH

- Wool absorbs indoor air contaminants, benefiting indoor air quality.
- Certified as low-VOC, meeting the Green Stars-Office Interiors emission requirements. Test certificate available on request.

DISPOSAL

- 100% biodegradable and recyclable through INSTYLE's REVIVE® program.

GREEN STAR

- The manufacturer has confirmed PLANET met the requirements of the GECA Textile Standard and GECA Furniture Standard (Section 3.3).



V090410

www.instyle.com.au

INSTYLE