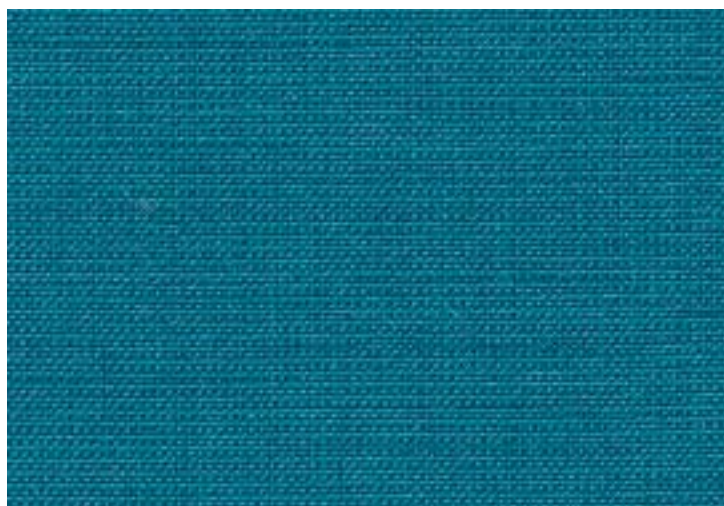


SOURCE (LIFE Textiles®)



COMPOSITION 100% Australian worsted EthEco® wool

WIDTH 188cm

WEIGHT 320gsm

PATTERN REPEAT Nil

ROLL SIZE 50m (approx.)

CARE CODE CTA 1 (upholstery)
ICT SCREENS (screens)

ABRASION
Wyzenbeek ASTM 4157 150,000 double rubs
Martindale AS2001.2.25 44,500

CTA RATING  HEAVY DUTY
COMMERCIAL USE

SEAM SLIPPAGE Warp 3.5mm Weft 5.7mm
AS2001.2.22

PILLING 5
Martindale IWS196

LIGHTFASTNESS 5
AS 2001.4.21

FIRE RATINGS Ignitability 10
AS 1530 Pt.3 Spread of Flame 0
Heat Evolved 0
Smoke Developed 4

AS/NZS 3837 BCA Group 1
(Cone Calorimeter) Av. Specific Extinction area
75.5m²/kg

NO. OF COLOURS 30

USE Upholstery, screen and
panels

V090410

www.instyle.com.au

ENVIRONMENTAL BENEFITS

RAW MATERIALS

- EthEco® wool is sourced from non-mulesed sheep cared for on holistic-managed farms.
- 100% sustainable, rapidly renewable content.

PRODUCTION

- Manufactured to strict environmental criteria (LIFE Textiles® specification).
- Environmentally Improved Production Process: reduced water and energy use, reuse of water (30%), recycling of waste, no hazardous substances.

HUMAN HEALTH

- Wool absorbs indoor air contaminants, benefiting indoor air quality.
- Certified as low-VOC, meeting the Green Stars-Office Interiors emission requirements. Test certificate available on request.

DISPOSAL

- 100% biodegradable and recyclable through INSTYLE's REVIVE® program.

GREEN STAR

- The manufacturer has confirmed SOURCE met the requirements of the GECA Textile Standard and GECA Furniture Standard (Section 3.3).



INSTYLE