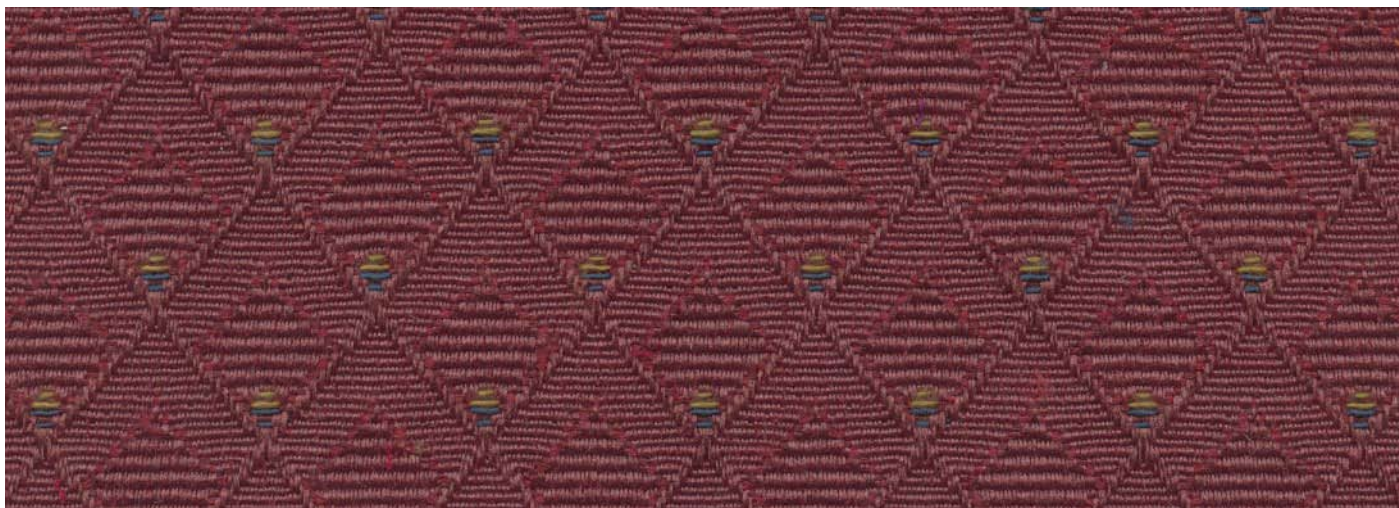



PRESTON



COMPOSITION	52% polyester 39% olefin 9% acrylic
WIDTH	137cm
WEIGHT	300gsm
PATTERN REPEAT	H 3.0cm / V 3.0cm
ROLL SIZE	50m (approx.)
CARE CODE	CTA 1
ABRASION Martindale AS2001.2.25	27,000
CTA RATING	 GENERAL COMMERCIAL USE
SEAM SLIPPAGE AS2001.2.22	Warp 6.0mm Weft 5.0mm
PILLING Martindale IWS196	3-4
LIGHTFASTNESS AS 2001.4.21	6-7
FIRE RATINGS AS 1530 Pt.3	Ignitability 14 Spread of Flame 0 Heat Evolved 3 Smoke Developed 4
NO. OF COLOURS	6
USE	Upholstery and screens

ENVIRONMENTAL BENEFITS

RAW MATERIALS

- 39% low embodied-energy material: olefin has a lower embodied-energy compared to polyester and nylon.

PRODUCTION

- Environmentally Improved Production Process: reduced water and energy use, reuse of water (30%), recycling of waste, no hazardous substances such as heavy metal dyes.