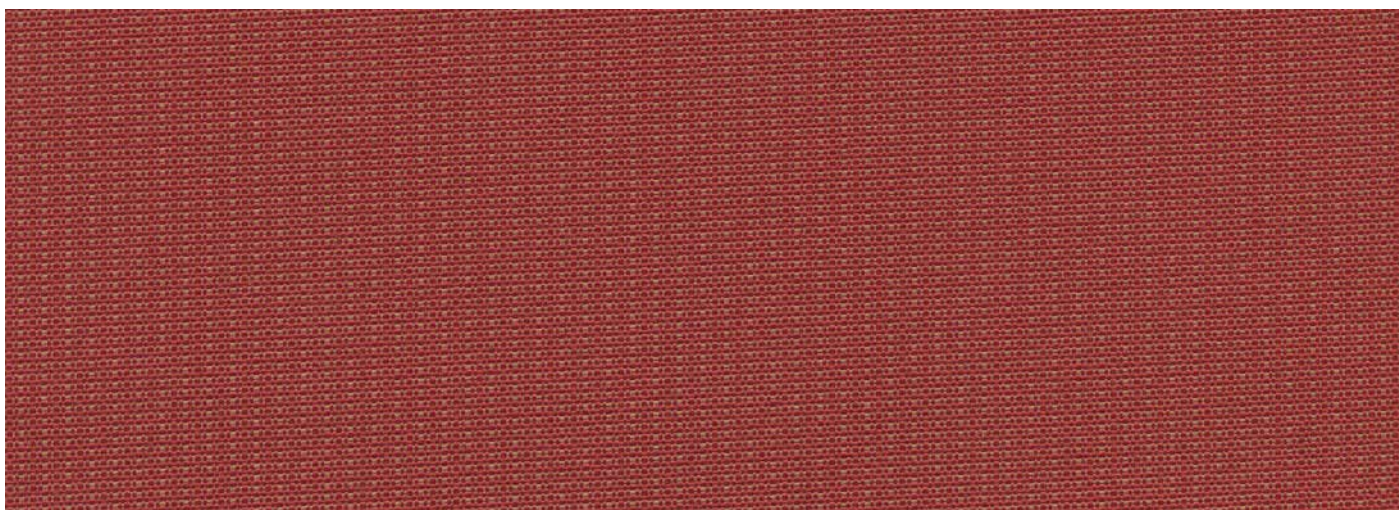



NEXT (High Performance - Crypton)



COMPOSITION	100% polyester with CRYPTON® finish & backing
WIDTH	137cm
WEIGHT	286gsm
PATTERN REPEAT	H 0.3cm / V 0.2cm
ROLL SIZE	55m (approx)
CARE CODE	Crypton
ABRASION Martindale AS2001.2.25 (12Kpa pressure)	90,000
CTA RATING	 HEAVY DUTY COMMERCIAL USE
SEAM SLIPPAGE AS2001.2.22	Warp 3.2mm Weft 2.7mm
PILLING Martindale IWS196	5
LIGHTFASTNESS AS 2001.4.21	> 5
FIRE RATINGS AS 1530 Pt.3	Ignitability 11 Spread of Flame 0 Heat Evolved 2 Smoke Developed 5
NO. OF COLOURS	11
USE	Upholstery and screens

PERFORMANCE FEATURES

- **Permanent protection** - Unlike applied coatings, topical treatments, or laminates, the CRYPTON® finish is engineered to penetrate right into the fabric, encapsulating every fibre. This provides permanent protection, preventing moisture, bacteria and stains from entering into fibres.
- **Permanent stain protection** - CRYPTON® textiles provide excellent stain resistance
- **Permanent odour and bacteria protection** - CRYPTON® textiles prohibit: bacteria; mould; mildew and fungi both on the fabric surface and within the fabric
- **Permanent moisture protection** - Stops fluid penetration through to foam.
- **Easy to clean** - Most stains can simply be wiped away using mild- powdered enzyme detergent and water. Assists keeping CRYPTON® textiles hygienically clean.
- Refer to CRYPTON Product Information for more detailed technical information.

ENVIRONMENTAL BENEFITS

PRODUCTION

- Environmentally Improved Production Process: CRYPTON® does not contain any toxic chemicals, heavy metals, perfluorooctanoic acids (PFOAs), carcinogens or VOCs. All chemicals are recycled during the Crypton® process.
- Manufacturer has an Environmental Management System.
- Fabric manufacturer is a member of E3 (Encouraging Environmental Excellence Program).

GREEN STAR

- The manufacturer has confirmed NEXT met the requirements of the GECA Textile Standard and GECA Furniture Standard (Section 3.3).