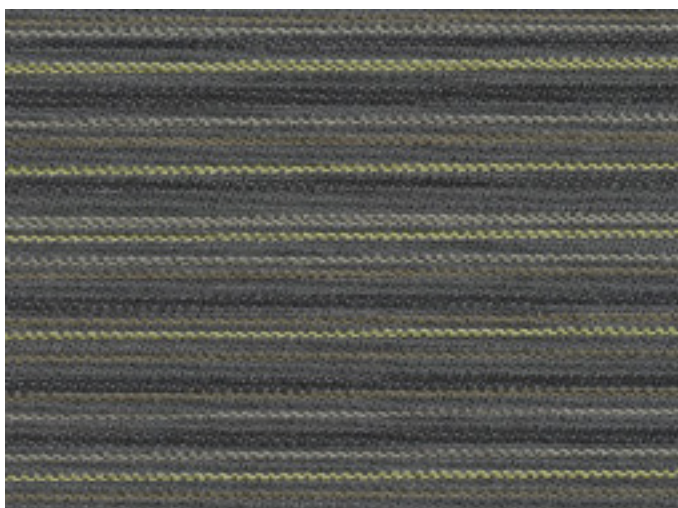


LINE (LIFE Textiles®)



COMPOSITION	100% Australian worsted EthEco® wool
WIDTH	54" (137cm)
WEIGHT	10.3 oz/sqyd (354 gsm)
PATTERN REPEAT	H n/a / V 4 ^{3/4} " (11.4 cm)
ROLL SIZE	58 yds (53 m approx.)
CARE CODE	S

ENVIRONMENTAL BENEFITS

RAW MATERIALS

- EthEco® wool is sourced from non-mulesed sheep cared for on holistic-managed farms.
- 100% sustainable, rapidly renewable content.

PRODUCTION

- Manufactured to strict environmental criteria (LIFE Textiles® specification).
- Environmentally Improved Production Process: reduced water (6% savings) and energy consumption, non-potable water supply (100% rain and ground water), reuse & recycling of waste, use of metal-free dyes.
- Manufacturer has an Environmental Management System and a Quality Management System.

HUMAN HEALTH

- Wool absorbs indoor air contaminants, benefiting indoor air quality.
- Certified as low-VOC, meeting the LEEDS-CI emission requirements. Test certificate available on request.

DISPOSAL

- Reusable, recyclable and 100% biodegradable.

ACT RATING

A HEAVY DUTY UPHOLSTERY

ABRASION

Wyzenbeek ASTM 4157 102,000 double rubs
Martindale ASTM D4966-98 41,500

SEAM SLIPPAGE

ASTM D3597-D434 Warp 209N (46 lbf)
Weft 193N (61 lbf)

BREAKING STRENGTH

ASTM D5034 (GRAB METHOD) Warp 494N (110 lbf)
Weft 704N (156 lbf)

PILLING

Martindale ASTM D4970-05 4/5

LIGHTFASTNESS AATCC 16E

5-6 (40 hours)

COLOURFASTNESS

AATCC 8 CROCKING Dry 5
Wet 5

FIRE RATINGS

California Bulletin 117 Section Complies

ASTM E84 (Unadhered method) Flame spread
Smoke developed
Class 1 or A

IMO Resolution A.652(16) Cigarette Pass
Butane Flame Pass

NO. OF COLOURS 9